

# 2015 CMARA Field Day Operations

---

## Contents

INTRODUCTION .....	1
Information: .....	2
Location: .....	2
Directions:.....	2
From West / South: .....	2
From North: .....	2
From East:.....	2
From High School Entrance: .....	2
GPS Coordinates, (Lat, Lon) (Negative Lon is West): .....	2
Google Maps Search Key: .....	2
Area Map of Spencer and Central Massachusetts: .....	3
Region Map of Prouty High School, Spencer, and Central Massachusetts: .....	4
Local Map of Prouty High School and Field Day Site: .....	5
ORGANIZATION.....	6
OPERATIONS .....	7
Schedule:.....	7
Field Day Rules: .....	7
Field Day Station Class:.....	7
WiFi: (2.4 GHz).....	7
Site Communications:.....	7
Site Layout .....	8
Field Day Band Chiefs:.....	9
Field Day Bonus Points: .....	10
Field Day Meals and Beverages Provided by the Club: .....	10
Bring your Own: .....	10
Let's Be Safe: (W3DEC is Safety Manager) .....	10

## INTRODUCTION

This document is an information packet for the 2015 CMARA Field Day Operations. This draft is distributed to encourage participation in the planning process. Please reply to [W1TR@YCCC.org](mailto:W1TR@YCCC.org) with comments regarding this FD plan.

### Information:

CMARA WEB: [www.CMARA.org](http://www.CMARA.org)  
FD BLOG: <http://groups.yahoo.com/group/cmarafd>  
W1TR: [W1TR@YCCC.org](mailto:W1TR@YCCC.org)

### Location:

Moose Hill, Athletic field behind David Prouty High School  
302 Main Street, Spencer, MA 01562

### Directions:

#### From West / South:

Follow Follow MassPike or I-84 to Sturbridge.  
Stay on RT-20 East, Turn Left on RT-49 North to Spencer.  
Follow RT-9 from JCT of RT-9 and RT-49 through Spencer Center.  
Arrival at David Prouty High School on Right.

#### From North:

Follow RT-31 from Holden or Paxton to JCT of RT 31 and RT-9  
Take left on RT-9 East until arrival at David Prouty High School on Right.

#### From East:

Follow RT-9 from Leicester, JCT of RT-9 and RT-56 until arrival at David Prouty High School on Left.

#### From High School Entrance:

As you enter the high school parking lot, proceed to the left side of the lot and go to the left around a utility building following the road up the hill to the athletic field near the water tower.

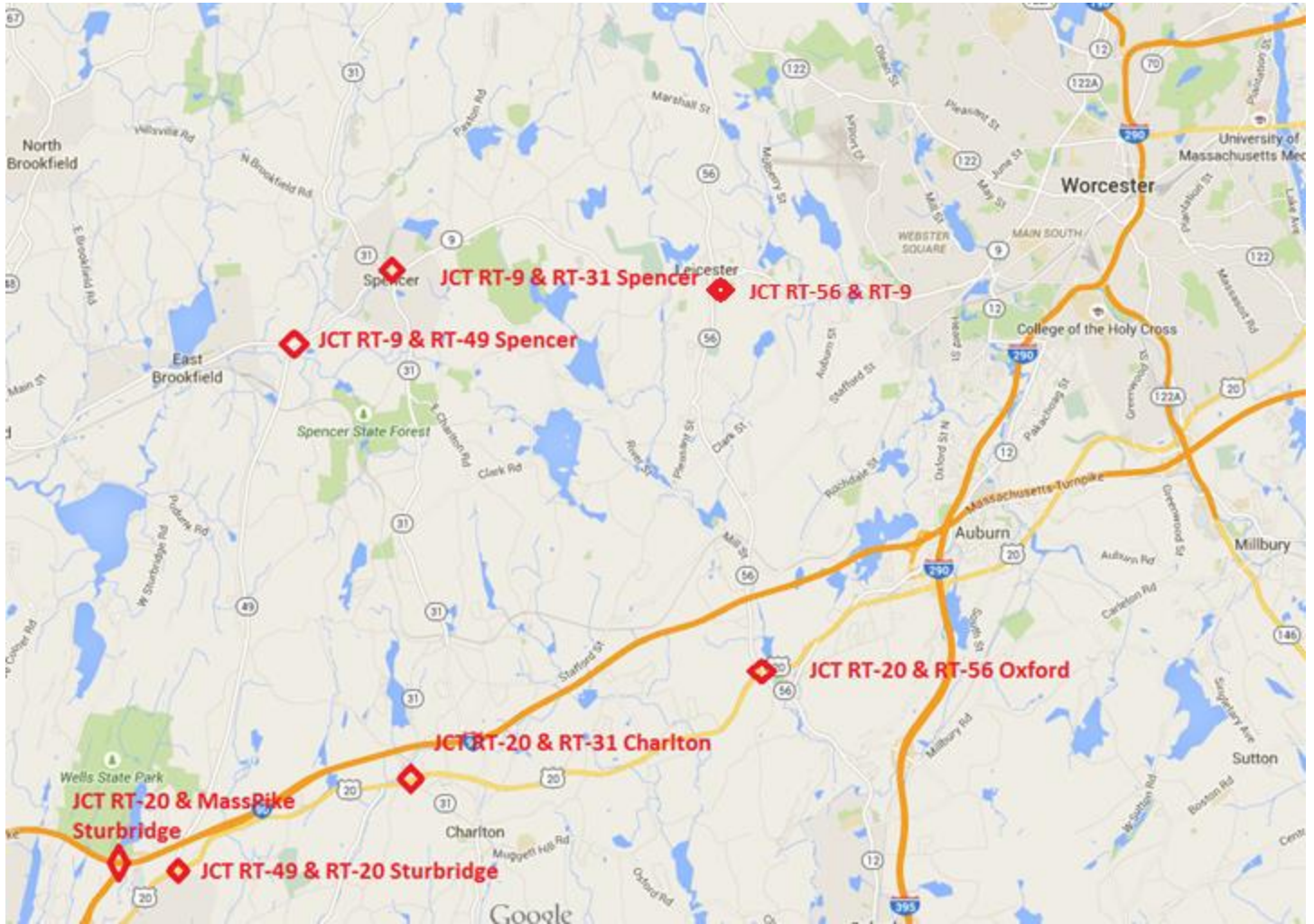
#### GPS Coordinates, (Lat, Lon) (Negative Lon is West):

Entrance to High School at the Street: **42.250951, -71.977947**  
Entrance to FD Site in School Parking Lot: **42.250876, -71.976721**  
Field Day Site Parking Lot at Top: **42.246410, -71.975388**

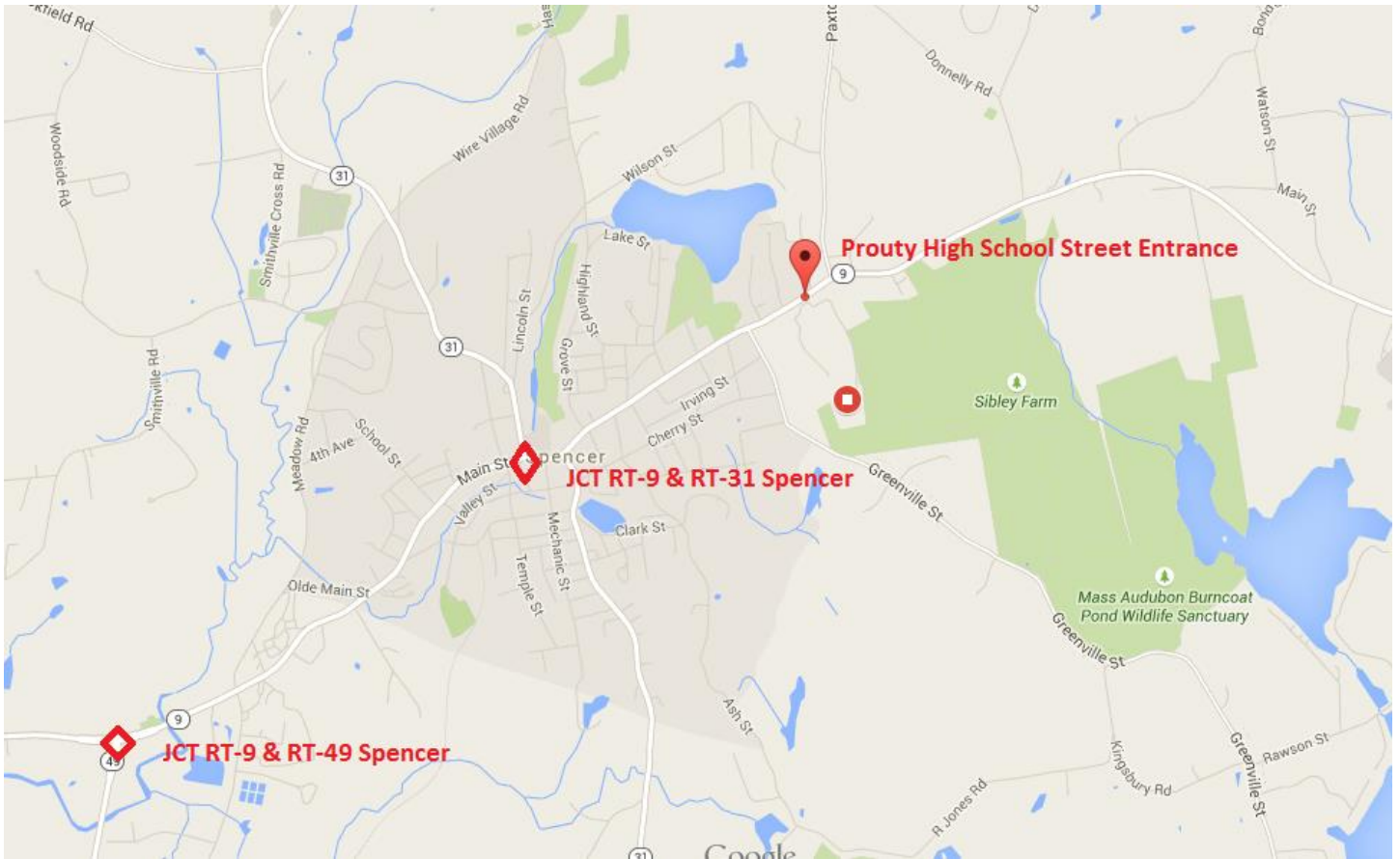
#### Google Maps Search Key:

David Prouty High School, Spencer, MA

## Area Map of Spencer and Central Massachusetts:

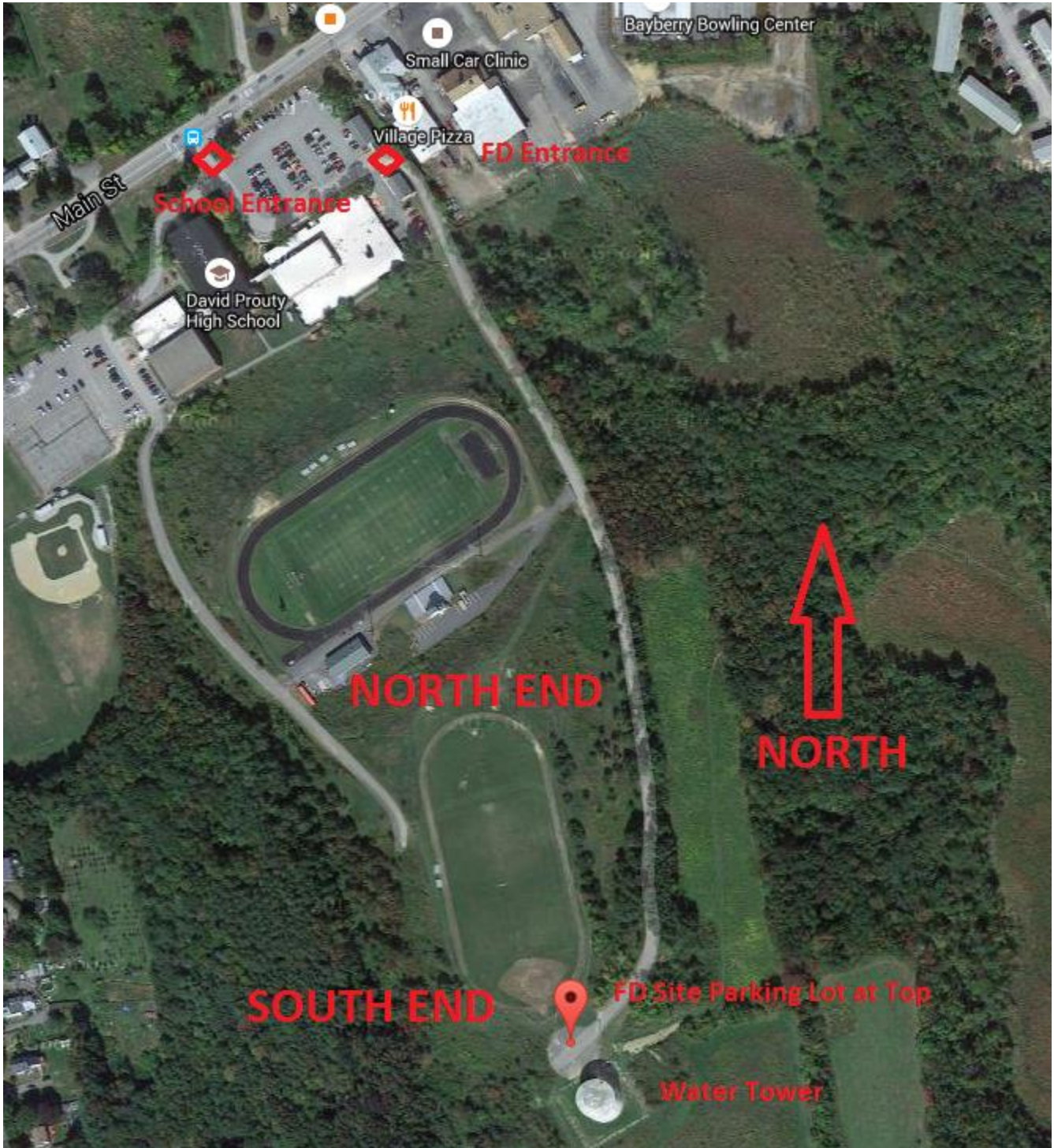


**Region Map of Prouty High School, Spencer, and Central Massachusetts:**



DRAFT

Local Map of Prouty High School and Field Day Site:



## ORGANIZATION

Note: FD Bonus Point Activities in RED, Items not yet fully committed in Orange

ROLE	RESPONSIBILITY	PERSON(S)
FD Chairman	Overall FD Management	Terry Glagowski / W1TR
Site Acquisition	Arrange for FD Site	Art Kass / WA1RCQ
Site Manager	Open / Close / Monitor FD Site	Art Kass / WA1RCQ
Safety Manager	Establish and Monitor Safety Rules	Don Carlton / W3DEC
Energy Manager	Coordinate Generators and Gasoline	Bob Peloquin / KB1VUA
Food Manager	Provide Food for FD Members	Art Kass / WA1RCQ +
FD Planning	Determine Location of FD Stations Determine FD Operations Determine Miscellaneous Logistics	Terry Glagowski / W1TR + Greg Algeri / WA1JXR + Bob Peloquin / KB1VUA
Log & Information Management	Provide FD Info to Club Members Provide CMARA FD Thumb Drives Provide WiFi Networking Collect and Consolidate Logs WEB Submission of FD Log Receive W1AW FD Bulletin Send FD Message to WMA SM	Terry Glagowski / W1TR
Web Announcements	Post FD Info on CMARA Web	Lyn Glagowski / WB1CCL
Public Relations	Provide Public Face of CMARA Setup and Operate GOTA Station Media Publicity Public Information Display Table Educational Activity Site Visitation: Public Official Site Visitation: Elected Official FD Youth Participation	Harold Carlson / N1ZC ???  W1TR (N1MM talk?)
Satellite Contact	Make FD Satellite Contact	Bill Acito / W1PA
Alternative Power	Make 5 FD Contacts using power other than commercial or generator	Harold Carlson / N1ZC ???

## OPERATIONS

### Schedule:

Site Open: 26-Jun-2015 (Fri) at 3 pm local (overnight OK)  
Setup: 27-Jun-2015 (Sat) 1200z (8 am local or earlier)  
Contest Begins: 27-Jun-2015 (Sat) 1800z (2 pm local)  
Contest Ends: 28-Jun-2015 (Sun) 1800z (2 pm local, some teardown may start about 12 noon)  
Site Close: 28-Jun-2015 (Sun) at 6 pm local

### Field Day Rules:

Summary: <http://www.arrl.org/field-day>

Full Rules: <http://www.arrl.org/files/file/Field-Day/2014/2014%20Rules.pdf>

Significant Change This Year:

**Canadian Ontario Section is now 4 Sections:**

**ONE – Ontario East**

**ONN – Ontario North**

**ONS – Ontario South**

**GTA - Greater Toronto Area**

### Field Day Station Class:

Callsign: W1BIM

Class: 6A (6 generator powered stations + GOTA + free VHF)

Section: Western Massachusetts (WMA)

### WiFi: (2.4 GHz)

Router: SSID: **W1BIM** (open, no password)

Repeater South: SSID: **W1BIM\_South** (open, no password)

Repeater North: SSID: **W1BIM\_North** (open, no password)

### Site Communications:

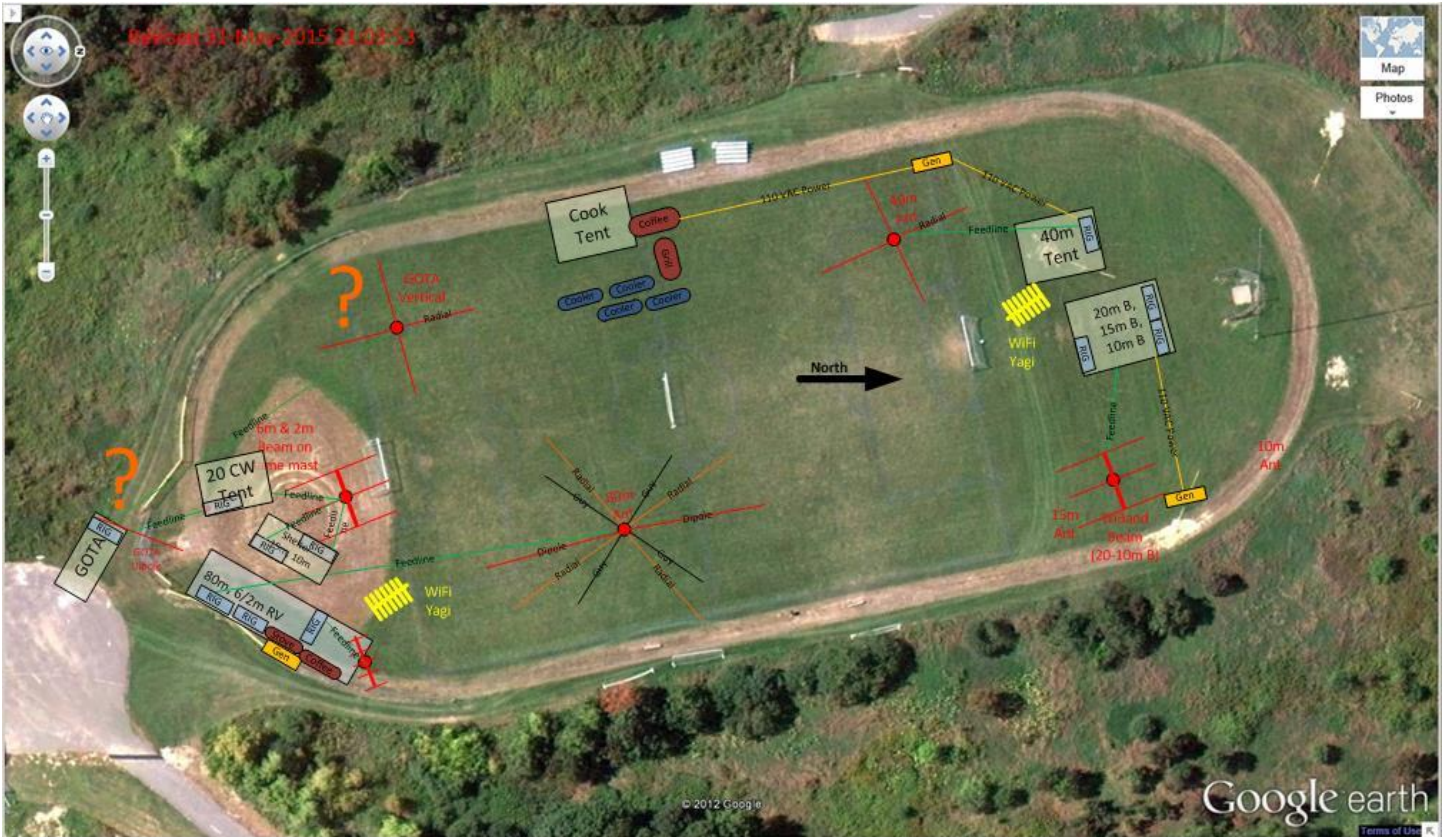
Paxton Repeater W1BIM: **146.970, PL: 114.8, Offset: - 600 KHz**

2 Meter Simplex: **146.520, PL: NONE**

Alternate Channels: **TBD**

N1MMplus Network: use the **TALK function** in the **Network Status Window**

# Site Layout



DRAFT



## Field Day Band Chiefs:

BAND	LOC	MODE	CHIEF	OPS	RIG	ANT	TENT	GEN
ALL	E	Digital	W1TR		IC-7000 W1TR	80 Dipole, Vertical	RV	RV
80m	E	CW SSB Digital	W1TR		IC-7000 W1TR	80 Dipole, Vertical	RV	RV
40m	W	CW SSB	KM1D W1JKS		Elecraft K2 W1JKS	40 Vertical	40 Tent	Mike
20m	S	CW SSB	WA1JXR	W1EPH	IC-765 WA1JXR	Triband Beam Triplexer	20 Tent	RV
15m	S	CW SSB	W3DEC	NG1I	FT-817 W3DEC	Triband Beam Triplexer	20-15 Tent	RV Tom
10m	S	CW SSB	?	NG1I NE1R	FT-897 CLUB	Triband Beam Triplexer	20-15 Tent	RV Tom
6m 2m	S	ALL	KB1VUA		FT-847 KB1VUA	5 el N1TQ 10 el N1TQ	RV	RV
20m  15m  10m	N	SSB CW SSB CW SSB CW	N1EKO		TS-440 N1EKO	Triband Beam	North Tent	AA2S
<b>GOTA</b>	<b>S</b>	<b>ALL</b>	<b>N1ZC ?</b>		<b>IC-730 Club</b>	<b>?</b>	<b>?</b>	<b>?</b>
Satellite		ALL	W1PA		FT-847 W1PA	2m/440 Yagi	N/A	N/A
Food	W	N/A	WA1RCQ		N/A	N/A	<b>?</b>	Mike

The 10-15-20 meter antennas need to be kept as busy as possible for 24 hours.  
What antenna will be used for the GOTA Station?

# WE NEED OPERATORS

We need a 10 Meter South Band Chief (We HAVE the club radio – FT897)

To relieve the band chiefs and other operators.

Contact FD Chairman (W1TR) with request for operating bands and/or times.

### Additional Operators:

W1PA – CW Operator after satellite contact is made

NE1R – Phone Operator at various times

N1ZC – Phone Operator

## Field Day Bonus Points:

Covered by Generators, Covered by W1TR, Covered by N1ZC ???, Covered by W1PA

- 1) 100% Emergency Power – 3 Generators, 6 Transmitters + VHF: 600 points, Class 6A WMA – (KB1VUA)
- 2) 100 points Media / Publicity - (N1ZC)
- 3) 100 points Public Information Table – (N1ZC)
- 4) 100 Points Message Origination to Section Manager (W1TR)
- 5) 10 Points Each, Message Handling (accept messages if you can, W1TR will relay them)
- 6) 100 Points Satellite QSO (W1PA)
- 7) 100 Points Alternate Power 5 contacts (N1ZC)
- 8) 100 Points W1AW Bulletin (W1TR)
- 9) 100 Points Educational Activity - (N1ZC Display, W1TR Briefing on N1MM?)
- 10) 100 Points Site Visit by GOVT Official (N1ZC)
- 11) 100 Points Site Visit by Agency Representative (N1ZC, does NE1R count for Red Cross?)
- 12) 0-100 Points GOTA Station / Operator Bonuses (N1ZC)
- 13) 20-100 Points Youth Participation (N1ZC)

## Field Day Meals and Beverages Provided by the Club:

Art Kass / WA1RCQ is the Food Manager

A combination of BYO, Food Runs, some cooking at the RV and Cook Tent, suggestions welcome.

Bacon, Eggs, Sausage, Burgers, Hotdogs, Chops, Potatoes

Menu TBD by Art / WA1RCQ

Lunch on Saturday

Dinner on Saturday

Breakfast on Sunday

Lunch on Sunday

Snacks BYO

What can members bring to help contribute to this?

Backup Rigs for FD

## Bring your Own:

### **NO ALCOHOLIC BEVERAGES**

Shelter, Sleeping Gear

Rig, Office Supplies

First Aid Kit, Insect Repellent, Antiseptic

Coolers, Soda and Drinks, Chips and Junk Food

## Let's Be Safe: (W3DEC is Safety Manager)

1. Use Yellow / Orange / Red safety tape to mark safe / unsafe areas
2. Bring flashlights or lanterns for walking in the night
3. Work with buddies when raising masts and towers, be aware of possible falling objects
4. Be careful with the electrical power, generators, cords, plugs
5. Be careful when working with soldering irons, knives, other tools
6. Be careful when cooking with grills, stoves, hotplates
7. Bring a first aid kit to the site if possible
8. Bring safety gear, gloves, safety glasses, etc. for appropriate activities